

BOOMWHACKER

COMPOSING

Primary



Thank you for choosing this product!
I created the "Boomwhacker Composing" activity for my students to not only practice rhythms, but also allow creativity for beginning composers. This is a great group activity and perfect for stations.

You may enjoy my other "Boomwhacker Composing" set for intermediate or advanced learners.

For more information on products, ideas, and to catch a glimpse of what's happening in my music classroom, follow me on Facebook and Blogger.

<http://batesclef.blogspot.com/>

<https://www.facebook.com/batesclefmusic>



BOOMWHACKER Composing



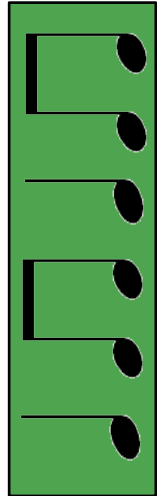
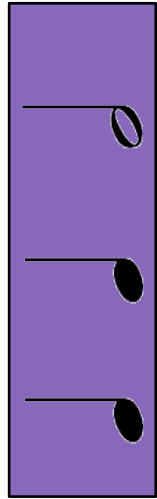
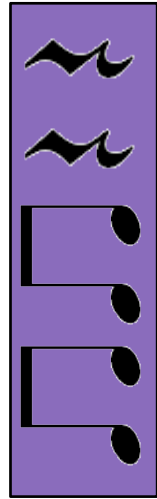
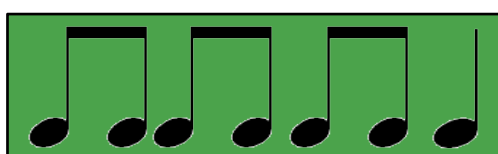
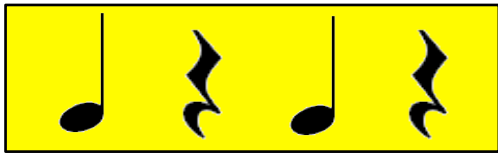
NAMES _____

Cut and glue Boomwhacker rhythms into each measure, then play your song with partners.

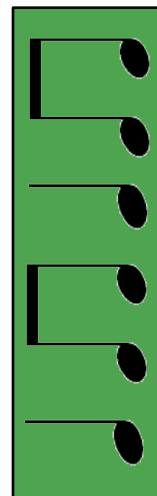
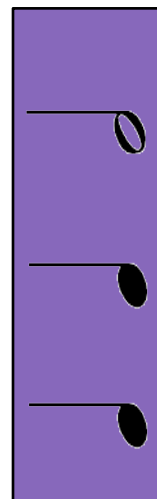
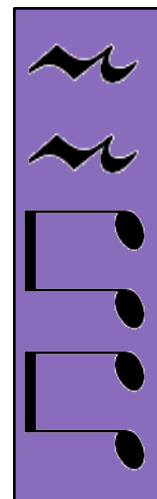
A musical staff with a treble clef on the left. The staff is divided into three equal measures by vertical bar lines. Each measure is a large empty rectangle for pasting a Boomwhacker rhythm.

A musical staff with a treble clef on the left. The staff is divided into three equal measures by vertical bar lines. Each measure is a large empty rectangle for pasting a Boomwhacker rhythm.

A musical staff with a treble clef on the left. The staff is divided into three equal measures by vertical bar lines. Each measure is a large empty rectangle for pasting a Boomwhacker rhythm.



- Cut Boomwhacker rhythms
- Glue each rhythm onto the composition sheet
- Play the song with your partners.



- Cut Boomwhacker rhythms
- Glue each rhythm onto the composition sheet
- Play the song with your partners.



Graphics Credits



<http://cherryworkshop.blogspot.com>

<http://www.teacherspayteachers.com/Store/Cherry-Workshop>

<http://imlovinlit.blogspot.com/>

<http://www.teacherspayteachers.com/Store/Lovin-Lit>

