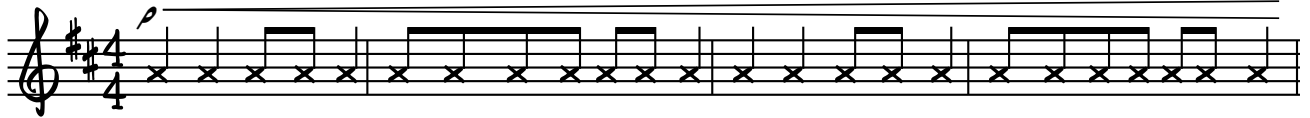


2. THE TURF-EATING TOOTHLESS TORTOISE

CREATURE CANTATA 2

KEVIN STANNARD &
REBECCA THOMPSON

TOOTHLESSLY WITH INCREASING URGENCY ♩ = 108



EGGS SNAP CRAC-KLE POP TOR-TOISE CRAWL-ING TO THE TOP DIG CLIMB BUR-ROW BORE TORT-OISE REA-DY TO EX-PLORE!

5 WITH TEETH!



HATCH-LINGS CREEP-ING FROM THEIR NEST (NEST) HAVE TO PASS THE TEST (TEST) GO AND FIND A
OLD BONES SOME-TIMES NEED A REST (REST) LA-ZI-NESS IS BEST (BEST) TOR-TOI-SES CAN



PATCH OF SCRAT-CHY CAC-TUS (CAC-TUS) HATCH-LINGS CREEP-ING FROM THEIR NEST (NEST) HAVE TO PASS THE
LIVE A HUN-DRED YEARS OR LONG-ER OLD BONES SOME-TIMES NEED A REST (REST) LA-ZI-NESS IS



TEST (TEST) FIND A PATCH OF SCRAT-CHY CAC-TUS OUCH! HUGE SHELL CAR-RIED ON THEIR BACK (BACK) REAL-LY NEED A
BEST (BEST) TOR-TOI-SES CAN LIVE A CEN-TU-RY.



JET PACK! TOR-TOI-SES MOVE VE-RY VE-RY VE-RY SLOW-LY HUGE SHELL CAR-RIED ON THEIR BACK (BACK) REAL-LY NEED A



JET PACK! TOR-TOI-SES ARE VE-RY VE-RY SLOW. SCA-LY LEGS AND SCRAW-NY
TOOTH-LESS BUT HE LIKES TO



NECK (NECK) FACE THAT LOOKS JU-RAS-SIC STRETCH-ING OUT HIS NECK TO REACH THE HIGH-ER BRAN-CHES
MUNCH (MUNCH) TOR-TOISE TURF FOR LUNCH (LUNCH) GRA-ZING ON A MIX OF TAS-TY HERBS AND GRASS-ES



SCA-LY LEGS AND SCRAW-NY NECK (NECK) FACE THAT LOOKS JU-RAS-SIC STRETCH-ING OUT HIS
TOOTH-LESS BUT HE LIKES TO MUNCH (MUNCH) TOR-TOISE TURF FOR LUNCH (LUNCH) GRA-ZING ON A

28

TONGUE TO REACH THE FOOD
MIX OF HERBS AND GRASS.

HUGE SHELL CAR - RIED ON THEIR

30

BACK (BACK) REAL - LY NEED A JET PACK!
TOR - TOI - SES MOVE

32

RALL. A TEMPO

VE - RY VE - RY VE - RY SLOW - LY
HUGE SHELL CAR - RIED ON THEIR
BACK (BACK) REAL - LY NEED A

35

RALL.

JET PACK! TOR - TOI - SES ARE VE - RY VE - RY SLOW.
(GIANT SIGH!)